



# bead IN HAND

145 Harrison Street  
Oak Park, Illinois  
708.848.1761  
www.beadinhand.com  
Mon, Tue, Fri: 10-6  
Wed: 1:30-6  
Thur: 10-7  
Sat: 10-5 / Sun: 12-5

How  
to

## Make the Caterpillar Bracelet



### SUPPLIES

- 7mm rolo chain, about 1/2 to 1 inch shorter than your wrist
- One button
- About 32 to 36 beads - 6mm to 8mm rounds or rondelles work well
- About 3 feet waxed linen



### GETTING STARTED

The key to this bracelet is keeping the chain "upright" as you work. For this pattern, let's call the links that are perpendicular to the work surface **UP** links, and the links that are parallel to the work surface **SIDE** links. You will start with an **UP** link, and finish with a **SIDE** link, so keep this in mind when you cut the chain. But if you find you need to remove or add a link later on, this is easy to do, as the rolo chain links are not soldered.



1. String the button on the waxed linen and center it, then tie a knot close to the button. You can use a shank button (as in this photo) or a sew-through button. If the shank is too small for the waxed linen, try putting a jump ring through it and stringing the waxed linen through the ring.

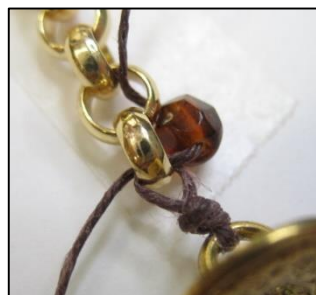


2. Bring both cord ends through the first link of the chain in opposite directions. Pull the cords snug. Not super tight -- just snug.



You'll add beads along one side of the chain, then do the second side. The beads sit next to the **UP** links, and the cord goes through the **SIDE** links

3. String one bead and bring it close to the first **UP** link. Bring the cord **UNDER** and through the next link of chain, which is the **SIDE** link.



4. Pull the cord snug and adjust the bead as necessary so it sits close to its link.

That's the basic step!

5. Add another bead, adjusting it if necessary so it sits snug against the **UP** link, and bring the cord under and through the next **SIDE** link.

In other words, the beads and cord alternate every other link.

Continue until you've finished one side.



### SIDE TWO

6. Flip your piece over to do the other side, starting again at the button.

**This time, bring the cord OVER and through the side links, instead of under.**

This way, the cords on both sides of the bracelet go through the side links in the same direction. This keeps the piece from twisting.



7. When you reach the end you'll see why you need to finish with a **SIDE** link. Bring the cords through this link in opposite directions.



8. Tie a knot snug against the last link. **OPTION:** We like to add size 11/0 or 8/0 metal seed beads to the cord before making the loop, but you don't have to. Then tie a knot in the cord to make a loop that fits around the button.



You can add extra dangles and charms if desired.

All finished!

